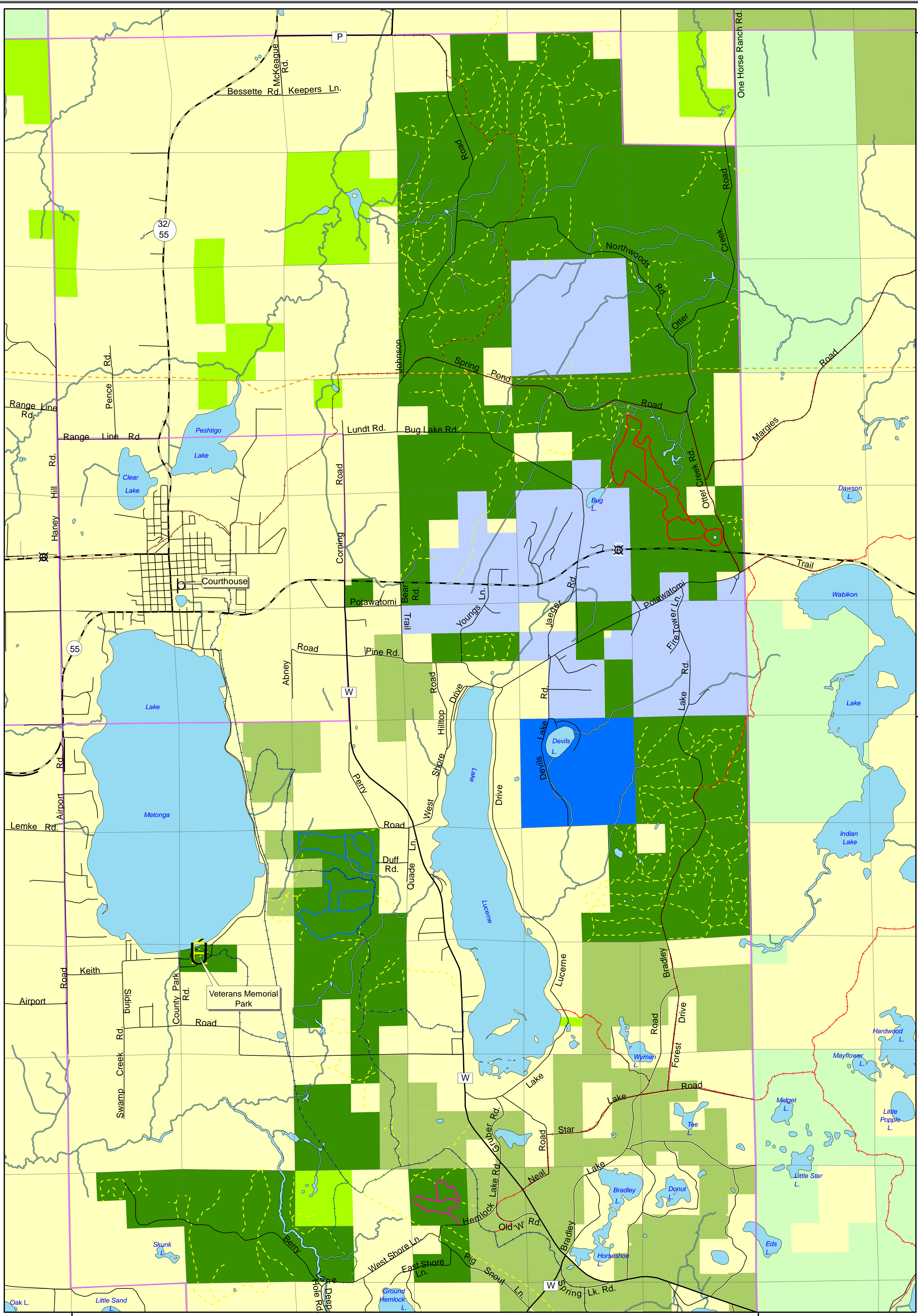


37 N.  
36 N.



36 N.  
35 N.

12 E. 13 E.

13 E. 14 E.

### Legend

- |  |   |
|--|---|
| <ul style="list-style-type: none"> <li> Hiking &amp; Biking Trails</li> <li> Hemlock Lake Ski Trail</li> <li> Otter Springs Ski Trail</li> <li> ATV Trails</li> <li> Pipeline</li> <li> 100 Mile Snow Safari</li> <li> Blackbear Sportsmen's Club</li> <li> Lumberjack Memorial Trails</li> <li> Tombstone/Pickerel Trails</li> <li> Town Lines</li> <li> Section Lines</li> </ul> | <p><b>Ownership</b></p> <ul style="list-style-type: none"> <li> Forest County</li> <li> Nicolet National Forest</li> <li> Potawatomi Tribe</li> <li> Private</li> <li> State of Wisconsin</li> <li> USA Indian Lands</li> <li> Plumcreek</li> </ul> |
|--|---|

DJP 2008

